

Connect grandMA3 fader wing

The grandMA3 onPC fader wing expands the onPC system with additional playback capabilities.



Important:

It is only possible to connect fader wings to grandMA3 onPC systems.
A maximum of two fader wings and one command wing can be connected.



Important:

Independent of the devices connected to the grandMA3 onPC software, the number of parameters can only reach a maximum of 4 096.

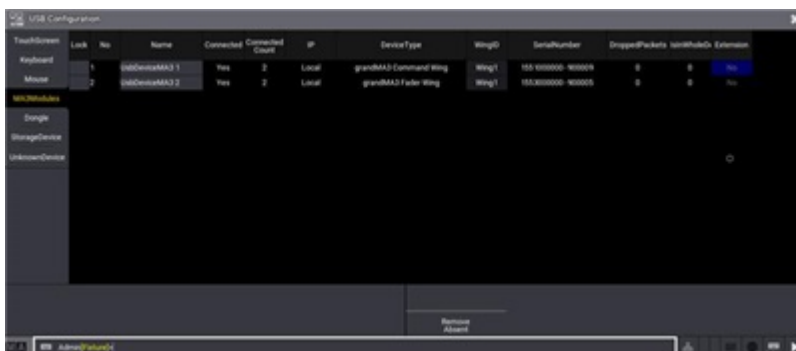
For more information see: [**Expand the Amount of Parameters topic**](#).

Procedure:

1. Connect the grandMA3 onPC fader wing with your command wing XT, PC, or laptop using a USB cable.
2. Start the grandMA3 command wing XT, PC or laptop.
3. Switch on the grandMA3 onPC fader wing.

To connect a grandMA3 onPC fader wing in combination with a grandMA3 onPC command wing to expand the number of executors, the wing configuration has to be changed:

1. To check the USB setting, tap **Settings** , **USB configuration** .



USB configuration auto adjust

1. To adjust the wing ID, tap **WingID** , and change the ID.

