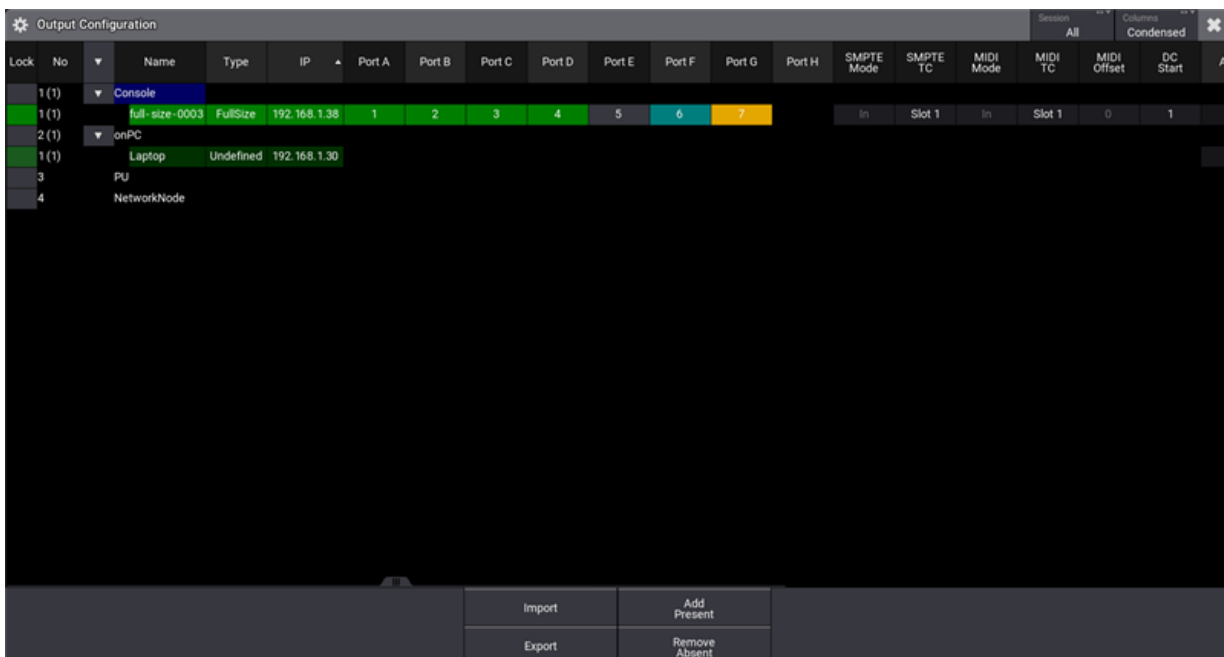


Connect MIDI

The MIDI connectors can be used for MIDI input or output, e.g. to send the MIDI timecode signal to the sound engineer.

To adjust the MIDI Remotes settings, read the [Remote In and Out topic](#).

You can configure the MIDI port settings per grandMA3 device in the [Output Configuration menu](#):




Output configuration menu with a console and an onPC

- Access the menu by pressing **Menu** and then tap **Output Configuration**.

-OR-

- Use the command line to open the menu:

 User name[Fixture]> Menu "OutputConfig"

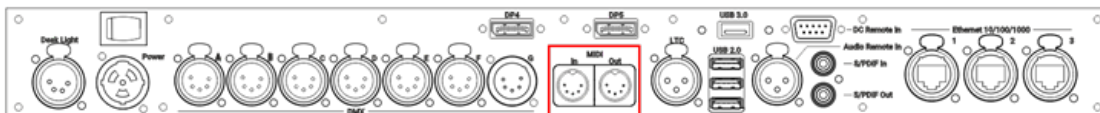
- To adjust the MIDI direction, tap and hold or right-click MIDI Mode.



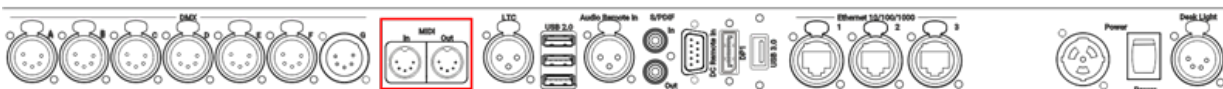
- Select **In**, **Out**, or **Through**.
The MIDI direction is set.

To learn more about MIDI TC settings, read the [What are Timecode Slots](#) topic.

- Connect the MIDI source to the **DIN connector** on the rear panel of the console.
The MIDI source is connected to the **DIN connector**.



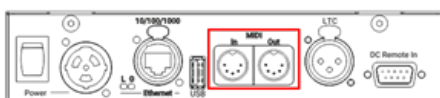
grandMA3 full-size (CRV) and light (CRV) rear panel – MIDI



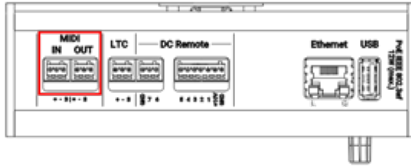
grandMA3 compact (XT) rear panel – MIDI



grandMA3 onPC command wing (XT) rear panel – MIDI



grandMA3 I/O Node rear panel – MIDI



grandMA3 I/O Node DIN-Rail rear panel – MIDI

To view the pinout of the DIN connector, refer to the topic [Connector Pin Assignment](#).