



## Update grandMA3 Xport Nodes



**Important:**

We recommend formatting with every update.  
Whenever formatting, the IP address will be reset back to default (DHCP).



**Important:**

- The folders EFI, ma, and other data included have to be directly accessible on the flash drive and must not be located in an extra folder.
- The USB flash drive's data system has to be FAT32.

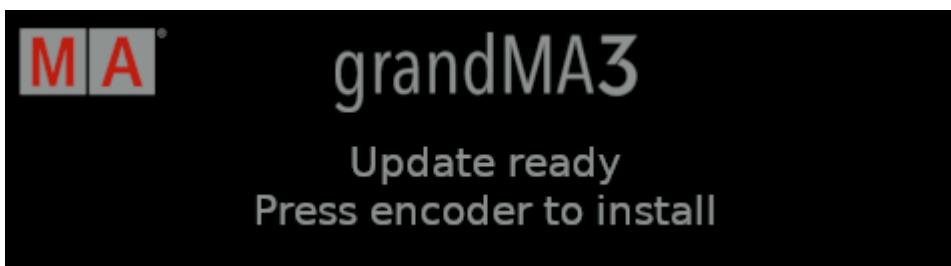


**Important:**

- grandMA3 onPC 2Port Node 2k outputs 1,024 parameters
- grandMA3 onPC 4Port 4k and 8Port Node 4k outputs 2,048 parameters when run in Mode2.

**Requirement:**

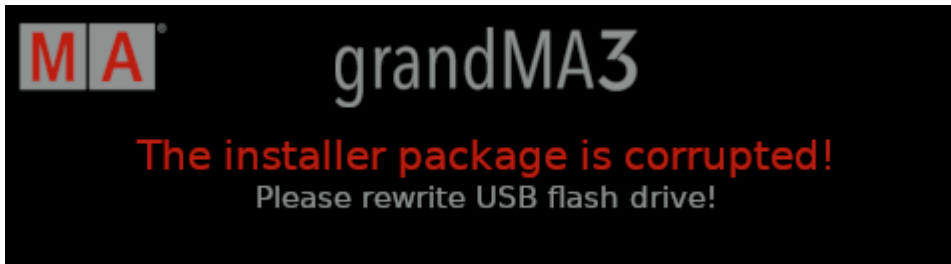
- Download the grandMA3 software on [www.malighting.com](http://www.malighting.com)
- Extract the entire data from the zip.file and copy it onto a USB flash drive.
  1. Insert the USB flash drive.
  2. Power up the grandMA3 xPort Node.
  3. Update notification appears.



*Update notification*

4. Press the rotary knob.

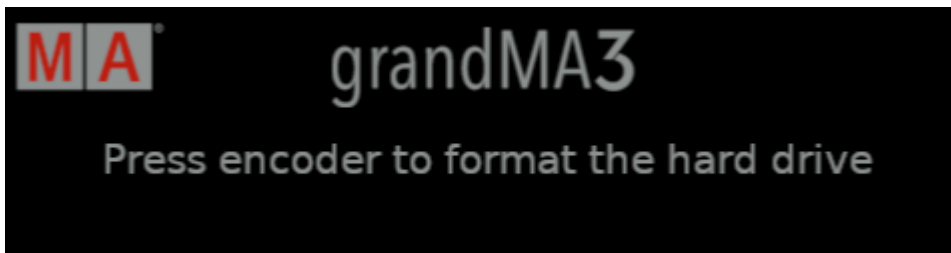
- In case of a corrupted installer package, this notification appears:



*Corrupted installer package*

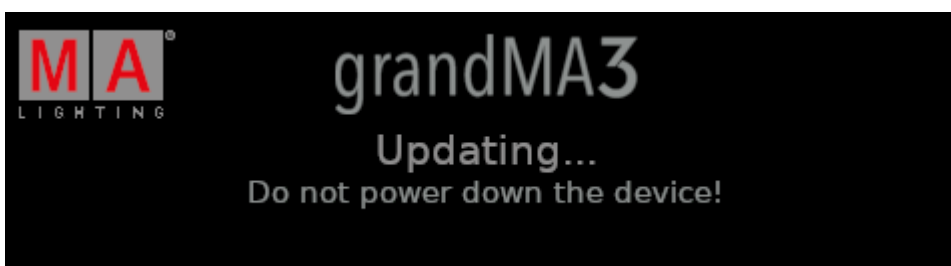
- To troubleshoot, rewrite the USB flash drive.

5. Formatting notification appears showing a progress bar.



*Format the hard drive*

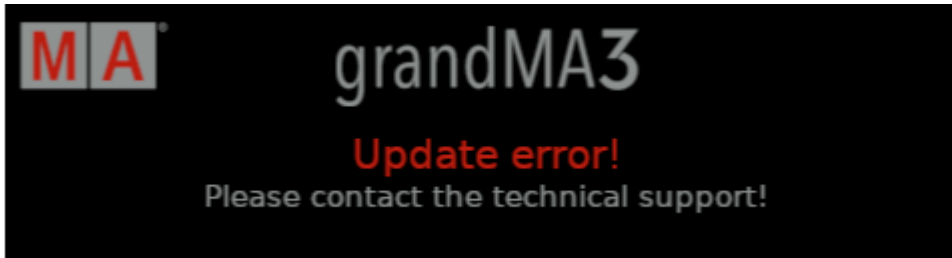
6. Press the rotary knob before the progress bar completes.
7. The grandMA3 xPort Node starts to update.



*grandMA3 xPort Node is updating*

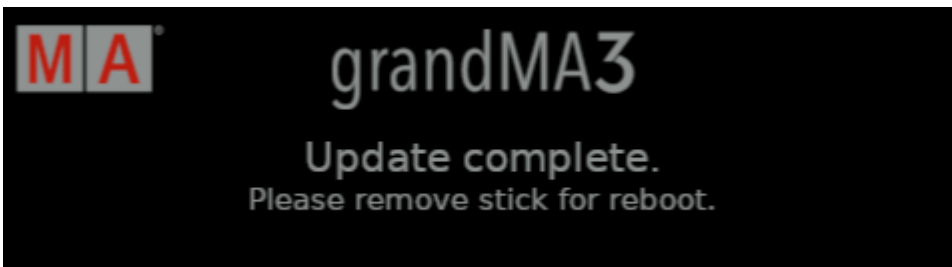
- 
- In case of an update error, contact the technical support.

For the contact details see the footer of this website.



*Update error*

- 
8. Once the update has been completed, a notification appears.



*Updated completed*

9. Remove the USB flash drive.
10. The display goes white and starts to reboot.

The grandMA3 xPort Node is updated.